

Observational Drawing: Top Drawing Tips



Look Closer

Take a closer look at what you are drawing.

- Is it rough or smooth? Shiny or dull?
- What colours is the object made up of?
- What markings can you see?

Try to include as much **detail** as possible!

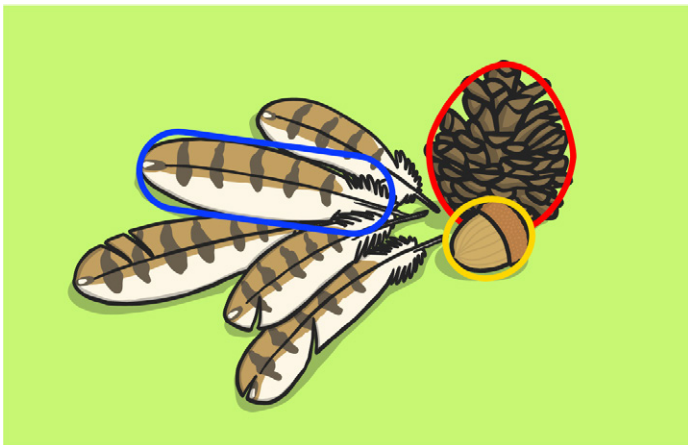


Use Your Hands

If you can, pick up the object and feel it. Take care if it is fragile!

- What are the textures like?
- Is it rough or smooth?
- Is it hard or soft?

Think about how you might draw these **textures**.



Step Back

Take a look at the whole object.

- What is the overall shape?
- Is it made up of different shapes?
- Which details are the most important?

Think about the **perspective** of the object.



Compare Sizes

Take a look at each part of the object.

- Which parts are small?
- Which parts are large?
- How do the sizes of each part compare?

Try and draw the objects in **proportion** with each other.

Observational Drawing: Top Drawing Tips



Frame It

Use a frame to decide which parts to draw.

- Do you want to draw the whole object or just one part?
- Which parts are the most interesting.

Use your frame to get a good **composition**.



Keep Looking

Look at your object and compare it to your drawing.

- Are the proportions correct?
- Have you missed anything?

Keep looking at the object to make sure your drawing is **accurate**.

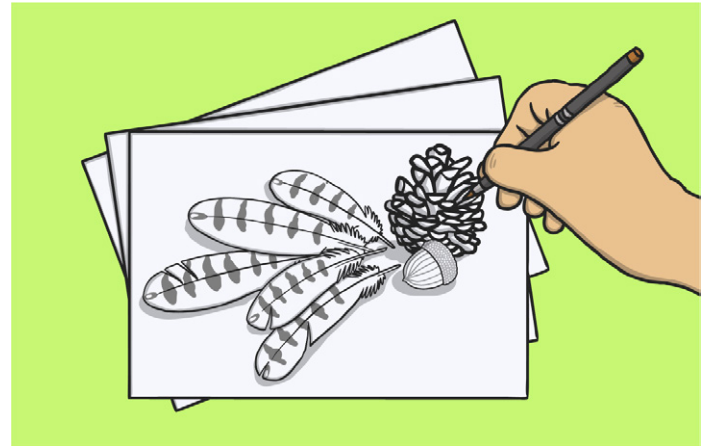


Light and Shade

Look at the shadows on the object that you are drawing.

- Where is the light source?
- What shadows can you see?
- Which areas are light and which are dark?

Show the shadow and light to create **contrast**.



Thick and Thin

Use thick and thin lines.

- Where are the edges of your object?
- Are there any fine details that need thinner lines?

Change the weight of your line to add **form** to your drawing.